



ANNUAL ADMINISTRATIVE REPORT 2007-08

NREGS : MEGHALAYA

COMMUNITY AND RURAL DEVELOPMENT DEPARTMENT
GOVERNMENT OF MEGHALAYA

I N D E X

	Page
1. Introduction	1
2. NREGS: Meghalaya	1
3. Villages covered and household registered under NREGS	2
4. IEC Activities	3
5. Training and Capacity Building	5
6. Planning of the Scheme	9
7. Achievements	9
8. Assets Created	10
9. Social Audit	11
10. Progress Report as on March 2007-08	

INDEX

1. Introduction	1
2. Methods	2
3. Results	3
4. Discussion	4
5. Conclusion	5
6. Acknowledgments	6
7. References	7
8. Appendix	8
9. Glossary	9
10. Bibliography	10

INTRODUCTION

NREG Act is the flagship programme of the Government of India that came into force in Meghalaya on 1st April 2006, initially covering the two districts of the State - West Garo Hills and South Garo Hills Districts. It was then implemented in an additional three districts with effect from 2007-08. These three districts are East Khasi Hills, Jaintia Hills, and Ri Bhoi Districts.

NREGA guarantees wage employment by strengthening natural resource management through works that address cause of chronic poverty like drought, deforestation and soil erosion and so encourage sustainable development. It emphasizes decentralized planning and implementation through democratic process by empowering Gram Panchayats. However, in case of Meghalaya, in the absence of such institutions, it is the Area Employment Councils and Village Employment Councils which have been adopted for purpose of NREGS, Meghalaya. In all Phase I and II districts, total number of AECs formed is 1069 and VECs are 4087. These village bodies will perform the duty of Gram Panchayat specified in the Act.

With its right based framework and demand driven approach, NREGA marks a paradigm shift from the previous wage programmes. Emphasis is on unskilled labour intensive work prohibiting the use of contractors and machinery. The Act also mandates 33% participation for women and provision of worksite facilities.

NREGS : Meghalaya

The State has a population of 23.19 lakhs out of which 18.65 lakhs belong to rural area. There are 5951 census villages in the State and so far in Phase I and Phase II NREGA districts 4126 villages are covered. The State Scheme Meghalaya Rural Employment Guarantee Scheme is notified in August 2006 now called National Rural Guarantee Scheme: Meghalaya, is applicable for Phase II districts also.

The Scheme Officially launched on 1.11.07 at Mawryngkneng Block under East Khasi Hills, at Khliehriat Block of Jaintia Hills on 26.10. 07 and at Nongpoh on 29.10.07. The Deputy Commissioners designated as District Programme Coordinators are responsible for all the activities for NREGS process in the district.

After two years of implementation, the scheme has generated 55.04 mandays of work reaching on an average 115578 households / families in five districts under NREGS Phase I and Phase II districts, and has particularly benefited rural marginal households.

NREGS has strong inbuilt transparency and accountability safeguards. Social Audits have been conducted in AECs during 2007-08 with the help of NGOs.

Transparency is also being ensured by putting all relevant information in the public domain through one of the largest web enabled database of rural households, the management Information System (MIS). All critical parameters including Muster Rolls, Job Cards, Fund Management, Wage Payment, Employment provided and works under execution are being uploaded onto MIS website for easy public access . However due to technical problems at the Block / AEC level the State could not fully operationalise MIS till date.

Villages covered and Households registered in the NREGA
Phase I Districts till March '08

Sl. No	Name of District	No. of Households as per census 2001.	No. of Households registered Under NREGS	No. of villages covered so far.	No. of Villages in the District.	No. of AECs formed	No. of VECs formed
1	West Garo Hills	85,724	95,769	1,501	1,501	451	1501
2	South Garo Hills	19708	20,461	657	657	134	653
	Total	105432	1,16,230	2158	2158	585	2154

Villages covered and Households registered in the NREGA
Phase II Districts till March '08

Sl. No	Name of District	No. of Households as per census 2001	No. of Households registered under NREGS	No. of villages covered so far.	No. of Villages in the district	No. of AECs formed	No. of VECs formed
1.	East Khasi Hills	72504	9697	898	980	258	878
2.	Jaintia Hills	57503	48951	498	498	179	475
3.	Ri Bhoi	31243	37724	570	570	147	580

IEC ACTIVITIES: This being the first time that Schemes are implemented through a participatory process of planning and implementation by the people, each District had drawn up intensive awareness campaigns to generate awareness among stakeholders mainly the rural people before the introduction of the ACT as follows:-

- Audio and Video cassettes in shape of songs and and plays were displayed and distributed.
- Publication of the ACT/ FAQs in Khasi and Garo Languages to key Government Officials and AEC/ VEC representatives.
- Poster / Banner / Flexi boards raised
- Pamphlets / literatures highlighting the main features of the Act / Scheme were circulated
- RTI and Social Audit under NREGS translated to Local Language for Phase I districts for follow up action.
- Convening Special meetings with Durbar Shnong / Local Headmen /Nokma etc to bring about awareness among representatives and key officials associated with implementation.
- Continuous social mobilization for raising awareness of NGOs, key Officials and AEC representatives at Block and District Level.

IEC Materials published under NREGS: Meghalaya



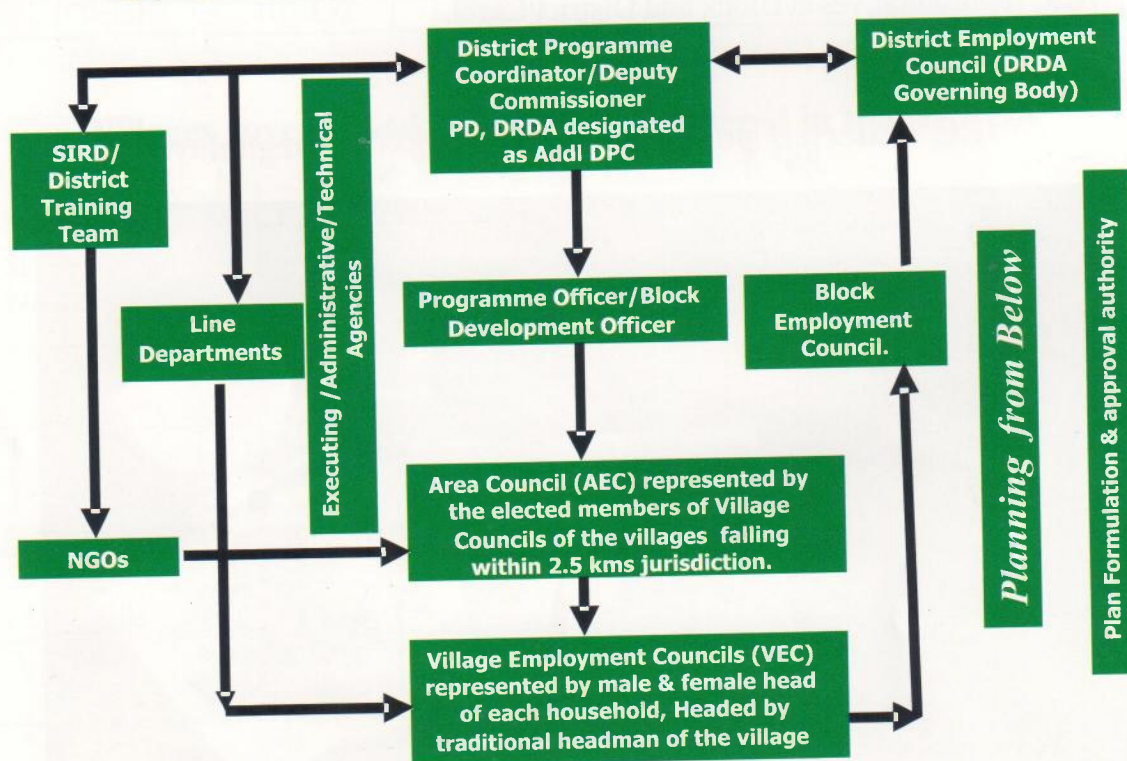
PERSONNEL ARRANGEMENT:

In order to carry out the scheme at the field, restructuring human resource is necessary and three tier institutional system and governance structure had been introduced as per provisions of the Act.

At the District level, Deputy Commissioners are notified as District Programme Coordinator, who is assisted by Project Director of DRDA and Officers of NREGA Cell . At the Block Level, The Block development Officers are notified as Programme Officers and at the village level, the Area Employment Councils which have the elected Chairman from among the representatives of Village Employment Councils . The Chairman is assisted by Secretary / Coordinator for implementation of works at the field.

For providing technical support to the Area Employment Councils, two Technical Assistants are posted to each Block , One Computer Operator for data processing and management of information. The Organogram clearly shows clearly how different stakeholders are involved in implementation and planning of NREGS in the District.

Implementation Arrangements of NREGS - Meghalaya.



CAPACITY BUILDING AND TRAINING:-

The role of the AEC&VEC as prescribed under the scheme is a major one for ensuring that objective of the Act is achieved. Each member of the Councils is accountable for proper identification of works to be taken up, planning and monitoring and supervising the implementation of the scheme. Therefore, capacity of the members of village organization will have to be built up to take up the challenge as an effective institution in delivering the benefits of the scheme to the community, not only by utilizing the resources available but also by using itself as a forum for dissemination of information about the scheme so that people may come forward for registration as well as for verification of applicants and for redressal of their grievances at any stage of project implementation.

In the context of our state, the sharing of responsibilities between the Programme Management at the District & Block level and the Employment Councils in matter of planning, monitoring and supervision are to be ensured for success of the programme and their respective roles defined in the Act have to be explained. Number of Training Programmes organized for District and Block Level functionaries, Selected District Level Trainers, Leaders of Village Committee/organization.

Training Programmes Conducted under NREGS by SIRD for Phase I Districts of West Garo Hills and South Garo Hills during 2007 - 08

A. RD Functionaries

Sl. No.	Name of the Programme	Number of Programmes conducted	Number of Participants attended
1	Social Audit under NREGS	5	177
2	Measurement of Works under NREGS	4	164
3	Awareness programme on NREGS for the NGOs	1	10
4	Workshop cum Review of NREGS for PDs, BDOs and Line Departments	1	46
	TOTAL	11	397

B. Elected Representatives

Sl. No.	Name of the Programme	Number of Programmes conducted	Number of Participants attended
1	Convergence for the members of AECs/VECs	12	974
	TOTAL	12	974

Total A+B:

23

1371

Training Programmes Conducted under NREGS by SIRD for Phase II Districts of East Khasi Hills, Jaintia Hills and Ri Bhoi 2007 - 08

A. RD Functionaries

Sl. No.	Name of the Programme	Number of Programmes conducted	Number of Participants attended
1	Sensitization Programme and Field Exposure under NREGS for District Level Officials	1	37
2	ToT on NREGS for District Level Trainers	1	48
3	Orientation Programme on NREGS for Gram Sevaks	3	113
4	MIS under NREGS	4	46
5	Workshop cum Review of NREGS for PDs, BDOs and Line Departments	1	46
	TOTAL	10	290

B. Elected Representatives

Sl. No.	Name of the Programme	Number of Programmes conducted	Number of Participants attended
1	Programme on NREGS for BEC Members	3	108
2	Sensitization Programme on NREGS for AEC and VEC Members	10	441
	TOTAL	13	549

Total A+B:

23

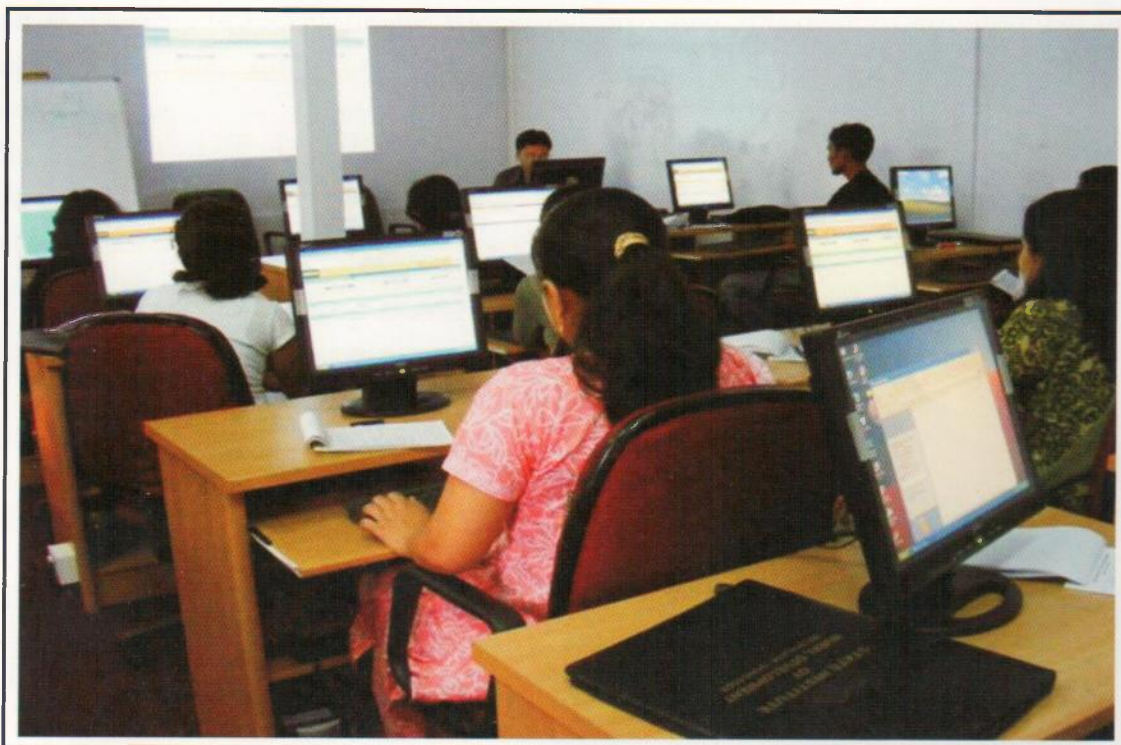
839

The WGHCRMS of IFAD Project, Meghalaya Rural Development Society, Bakdil, Bosco Reach Out, RRTC Umran and many other NGOs have signed MOU with respective District Programme Coordinators and actively taken part in Orientation and Sensitization programmes of NREGS conducted by DPCs while Training and Capacity building for District Level, Block Level and AEC Level for various components of NREGS had been taken up by the State Institute of Rural Development, Nongsder .

Below: A workshop on NREGS: Meghalaya organized for Officers of Phase II Districts



Below: Training for Data Entry Operators at SIRD for MIS, NREGA



Below: Participants on exercise for measurement of Works Training Programme at SIRD



Below : Officers of Phase II Districts at Tura for exposure cum Training Programme on NREGS



PLANNING OF THE SCHEME: -

The Village Employment Council at its level identify works for the year as per the felt needs and taking work demand into account, which is compiled by Area Employment Council and forwarded to the Block Level. Consolidated Annual Block Plan then placed before the Block Employment Council by the Programme Officer for approval. Each Block will submit its Annual Plan to the district which in turn will compile the Annual Plan for the District and prepare Labour Budget for the next financial year and place it to District Employment Council. Each District has its plan with projected outlay for Labour and Material expenditure which does not exceed 60:40. The preference is given for Water Conservation and Afforestation and also rural connectivity. Line Departments have also been associated with the planning process giving technical guidance and convergence of programmes. District Technical Core Committee comprising of District Technical Development Heads was formed by each district to advise on all NREGS works.

Each District draws up District Perspective Plan for Five Years projecting the number of Schemes that will be taken up annually with tentative budget estimates. Districts are assisted by technical consultants in preparing these District Plans. Jaintia Hills District identified Meghalaya Rural Development Society, East Khasi Hills- National Institute of Rural Development and Ri Bhoi- State Institute of Rural Development for preparation of District perspective Plans.

ACHIEVEMENTS:

During 2007-08, out of total registered households of 95769 in West Garo Hills District, Gambegre Development Block had provided 100 days of employment to 4071 households being 82% of achievements in terms of wage employment, followed by Dadenggre Block which achieved 805 households against 6710 registered households. In South Garo Hills Baghmara Development Block had achieved 100 days of employment in 2424 households followed by Gasuapara which achieved 234 households. In Phase II Districts East Khasi Hills District had also achieved 100 days of employment for 8 households despite the fact that the scheme had taken off physically towards the end of 2007.

Performance at a Glance for 2007-08:

Households registered till March '08	2,12,602
Job Cards issued to households	143322
Employment demanded	124602
Employment provided	123198
Employment generated in persondays	56.76 lakhs
Total Fund available	Rs 7427.44 lakhs
Total expenditure	Rs 4591.10 lakhs
Payment of wages	Rs 4074.44 lakhs

ASSETS CREATED DURING 2007-08 : (Rs in Lakhs)

Sl No.	Works / Activities	Completed works		Ongoing works	
		Unit/ Numbers	Expenditure	Unit/ Numbers	Expenditure
1.	Water conservation and Harvesting (<i>digging of new tanks / ponds/percolation tanks, small check dams etc.</i>)	510	327.99	450	
2.	Drought Proofing (<i>afforestation, tree plantation etc.</i>)	464	527.12	430	
3.	Micro Irrigation works (<i>irrigation canals</i>)	137	158.97	100	
4.	Provision of irrigation facility to land owned by SC/SC/IAY beneficiaries	3	1.91	11	
5.	Renovation of traditional water bodies (<i>desilting, of tanks, ponds, canals wells etc</i>)	380	175.82	319	123.51
6.	Land Development (<i>plantation , land leveling etc</i>)	103	87.35	176	118.36
7.	Flood control and protection (<i>drainage in water logged areas, construction and repair of embankment</i>)	55	120.87	50	58.96
8.	Rural Connectivity	1021	1274.79	959	1091.70
9.	Any other activity (<i>approved by MORD</i>)	0	0	0	0
	Total	2842	2675	2495	1983

While creating assets under NREGA, State Schedule of rates and departmental norms are predominately approached for similar tasks and activities, but in NREGA there is no choice of the worker, contractors are banned and machinery is not permissible. So while a pressure for compatibility with government rates is understandable, one can not ignore the provisions of NREGA and its difference with other departmental works. Wage realization is based on work outturn. For ensuring a good quality of work and durability, high level of performance, skills and productivity are required. Low wage rate, ban on use of machinery and limited provisions of tools can not reach out to the expectation of all categories of workers.

Social Audit and RTI is one of essential elements of NREGS for maintaining transparency and accountability. It shows several systematic bottlenecks at Management levels. Proactive disclosure of information by AEC/VECs is mandatory under the ACT . The AEC / VEC under the Act has to furnish all information to the workers regarding and works through public display etc . Each VEC is required to set up information walls for display of details of NREGS works. Social Audit is facilitated by NGOs which helps to resolve discrepancies in processes of NREGS implementation. Phase I Districts have already undertaken Social Audit and Phase II districts are already in process.

NREGS processes and implementation is also subject to inspection by National Level Monitors, Central Evaluation Team and Local CAs very year.

Below: A Public Forum for hearing on Social Audit in front of DPC and Other Public Leaders and Programme Officer taking place in Selsela Block.



**Below : Left: : A Social Audit Report on NREGS Implementation being presented
Right: Secretary AEC responding to Social Audit Observations**



CHALLENGES:

- The State Minimum Wage Rate is applicable under NREGS. Thus it has created competition of labour in rural areas. While participation of male workers is low under NREGS, it is popular among female wage seekers and women participation could be visible at 60% - 80% and thus bringing additional income to the family. However there is constraint for skilled labour due to low Wage Rate, and Time Motion Study is yet to take place to determine the value of wage rates in different regions of the State.
- Area Employment Councils and Village Employment Councils are new Institutions established for purpose of NREGS. Since these institutions are not revenue earning bodies and administrative provisions available is inadequate to engage expert hands and other office equipments, there are difficulties for coping up with demands of workload .
- The posting of Technical Assistants for supervision and measurements of works at AEC / VEC level was mandated under the ACT , however shortage of Technical Assistants and non availability of Gram Shayak are the major setbacks in timely implementation of works.
- Workers' receiving timely wages is crucial. Measurement and verification of muster rolls before payment and delay in transfer of funds to concerned accounts of AECs, VECs, are the main factors being witnessed for delay in wage payment.
- The recent instruction received from the Government of India to make payments to all wage earners through banks and post offices for more transparency and effective payment of wages. In Meghalaya due to remoteness of many villages, this has posed a problem as wage earners have to walk long distances to collect wages. Besides the coverage of Banks and post Offices is also not upto the mark. However, State Government along with Banks / Post Offices are making efforts to make this operational , though situations of ground realities are different and may take time to realize it fully.
- ICT infrastructure at the Block and Districts needs to be strengthened to ensure successful implementation of MIS and timely flow of information from the grass root level to the District and to the State and to GOI. Due to connectivity problem, online monitoring was not smooth and data entry could not be uploaded in time to MIS server. This is creating incorrect picture on State's performance and pause problems in coordinating efforts of State and MORD
- While in activities of soil conservation, land development, water harvesting or environment services, current ratio of 60:40 is manageable in investment of works that can generate employment, the construction of roads and culverts demands enhancement of this ratio specially in hilly areas where more skilled labours are required due to hard and rocky type of soil.



Construction of motorable road from Lad Nongthrkhang to Thad Nonghali

- Sanctioned Amount : Rs 3,28,143/-
- Implemented through NREGS 2007-2008
- Implemented by : Nonghlali AECI (VEC)
- Length of the Road : 0.850 Km
- Household Registered : 162 Nos



Water harvesting pond at Mawrangpiat, 12 Mer (during construction)



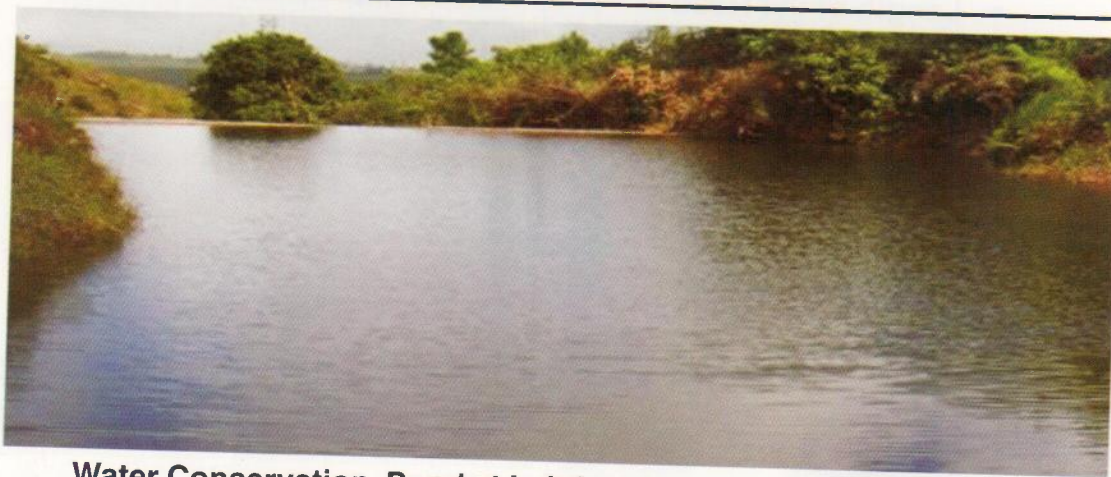
Water Conservation Pond at Mawrangpiat 12 Mer (after completion)

- Year : 2007-2008, 2008-2009
- Total Amount Sanctioned : Rs. 6,95,200/-
- Wages : 4,20,000/-
- Material Cost : Rs. 2,75,200/-
- Total Person days : 6000



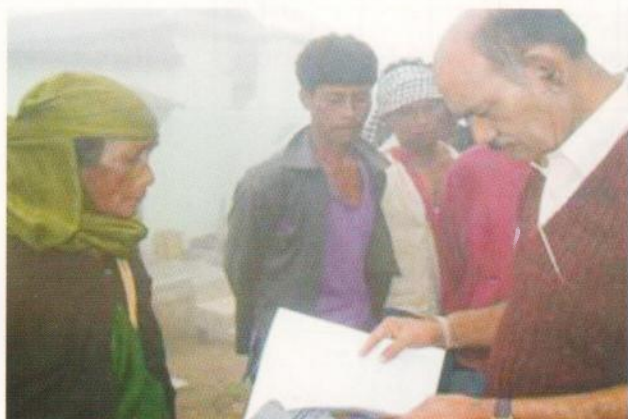
Water Conservation Pond at Umdiengpoh after completion

- Year : 2007-2008, 2008-2009
- Total Amount Sanctioned : Rs. 1,92,000/-
- Wages : 1,47,000/-
- Material Cost : Rs. 45,000/-
- Total Person days : 2100



Water Conservation Pond at Laitthemlangseh (after completion)

- Year : 2007-2008, 2008-2009
- Total Amount Sanctioned : Rs. 1,26,000/-
- Wages : 91,000/-
- Material Cost : Rs. 35,000/-
- Total Person days : 1800



National Level Monitoring Officer (NREGA) at worksite on his visit to Langkyrdem (VEC) under Pynursla Block, East Khasi Hills District on 4th June 2008

NREGS-(2007-2008): Umsning Block

Construction of Motorable road from Ingmane to Siej massar 0.60 Km :



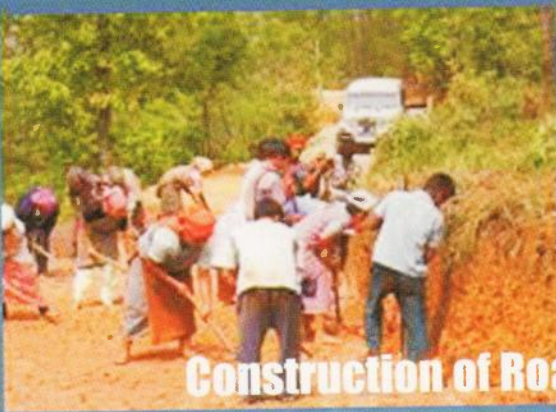
The motorable road from Ingmane to Siej massar at a length of 0.60 Km has been constructed under the scheme NREGS during the year 2007-2008. The work is in progress and almost completed as per plan and estimate at a sanctioned amount of Rs. 2,04,000.00 (Rupees Two Lakhs and Four Thousand) only. The main objective of the scheme is to connect the Jaiaw Pdeng village with Labansaro village. The objective of the scheme is to provide employment opportunity to the villagers under the AEC during the construction to the villagers of Jaiaw Pdeng village in particular. After completion of this project, villagers of Jaiaw Pdeng and adjoining areas will be benefited for transportation of agricultural products, school going children, medical facilities etc at Umroi area.

NREGS-(2007-2008): Umsning Block

Construction of Motorable road from Themumshrah to Lumshnong 1.00Km :




The motorable road from Themumshrah to Lumshnong at a length of 1.00Km has been constructed under the scheme NREGS during the year 2007-2008. The work is in progress and almost completed as per plan and estimate at a sanctioned amount of Rs. Rs.3, 40,000.00 (Rupees Three lakhs Forty Thousand) only. The main objective of the scheme is to connect the Mawthai village with Labansaro village. The objective of the scheme is to provide employment opportunity to the villagers under the AEC during the construction to the villagers of Jaiaw Pdeng village in particular.



Construction of Road at Mawsiatkhniam

• Persondays	:	1050
• Wages	:	Rs. 73,500/-
• Name of AEC	:	Nongkohlew
• Name of VEC	:	Mawsiatkhniam
• Year	:	2007-08



MONTHLY PROGRESS REPORT UNDER NATIONAL RURAL EMPLOYMENT GUARANTEE ACT (NREGA)
EMPLOYMENT GENERATION UNDER NREGA DURING THE YEAR 2007 - 08 UP TO THE MONTH OF MARCH 2008.

NAME OF THE STATE : MEGHALAYA

S.No	District	Employment generated in lakh persondays (cumulative for the year up to reporting month)										
		SCs		STs		Others		Total		No. of days worked by women in col. 10	No. of land reform/ IAY beneficiary out of col. 9	Disabled beneficiaries out of Col. 9
		Households	Persondays	Households	Persondays	Households	Persondays	Households (Col.3+5+7)	Persondays (Col.4+6+8)			
1	2	3	4	5	6	7	8	9	10	11	12	13
1	West Garo Hills	784	0.70967	66170	34.82867	13431	7.03455	80385	42.57289	11.6124	3671	200
2	South Garo Hills	0	0	17778	10.55	0	0	17778	10.55	1.66047	0	24
3	East Khasi Hills	0	0	9000	0.11	0	0	9000	0.11	0.04	33	0
4	Ri-Bhoi	Nil	Nil	8287	1.69	128	0.1155	8415	1.8055	1.04	Nil	5
5	Jaintia Hills	0	0	0	0	0	0	0	0	0	0	0
Total		784	0.70967	101235	47.17867	13559	7.15005	115578	55.03839	14.35287	3671	224

MONTHLY PROGRESS REPORT DISTRICT-WISE UNDER NATIONAL RURAL EMPLOYMENT GUARANTEE ACT (NREGA)
EMPLOYMENT GENERATION UNDER NREGA DURING THE YEAR 2007 - 08 UP TO THE MONTH OF MARCH 2008.

NAME OF THE STATE : MEGHALAYA

S.No	District	No. of households issued job cards(till the reporting month)				No. of households who have demanded wage employment			Out of column 3, number of households provided employment			Out of total of column 4, no. of individual applicants provided employment during the month	No. of women provided employment out of Col. 5	Cumulative number of households which have completed 100 days of employment
		SCs	STs	Others	Total	Households demanded up to previous month	additional (fresh) household demand during month	Total	Households provided employment up to previous month	additional (fresh) households provided employment during month	Total			
	1	2				3			4			5	6	7
1	West Garo Hills	788	76404	17666	94858	93550	8	93558	92812	8	92820	32378	19416	4915
2	South Garo Hills	70	18047	Nil	18117	13185	512	13697	13185	267	13452	23550	7977	2658
3	East Khasi Hills	0	9697	0	9697	690	8267	8957	459	8335	8794	10149	3307	8
4	Ri-Bhoi	0	10921	205	11126	8390	0	8390	8132	0	8132	8152	5016	Nil
5	Jaintia Hills	0	9524	0	9524	0	0	0	0	0	0	0	0	0
Total		858	124593	17666	143322	115815	8787	124602	114588	275	123198	55928	35716	7573

PART-III

MONTHLY PROGRESS REPORT UNDER NATIONAL RURAL EMPLOYMENT GUARANTEE ACT (NREGA)

FINANCIAL PERFORMANCE UNDER NREGA DURING THE YEAR 2007 - 08 UP TO THE MONTH OF MARCH 2008.

NAME OF THE STATE : MEGHALAYA

Sl.No.	District	O.B. as on 1st April of the year 2007-08	Release of last year received during the current year		Release during current year		Misc. receipts	Total fund availability (3+4+5+6+ 7+8)	Cumulative expenditure					Reported till the Month of
			Central	State	Central	State			On unskilled wage component	On semi- skilled and skilled wages	On material	On contingen- cies	Total (10+11+12 +13)	
1	2	3	4	5	6	7	8	9	10	11	12	13	14	
1	West Garo Hills	411.53	507.29	0.00	2937.32	0.00	18.23	3874.37	2973.00	54.41	36.52	18.16	3082.09	March '08
2	South Garo Hills	390.21	526.45	36.00	353.53	16.00	11.03	1333.22	844.43	33.02	207.14	2.39	1086.98	March '08
3	East Khasi Hills	0.00	0.00	0.00	900.91	95.15	66.35	1062.41	130.00	0.71	42.28	33.40	206.39	March '08
4	Ri-Bhoi	6.63	0.00	0.00	440.43	43.22	2.78	493.06	126.69	0.00	52.31	36.64	215.64	March '08
5	Jaintia Hills	0.00	0.00	0.00	601.79	61.92	0.67	664.38	0.00	0.00	0.00	28.01	28.01	March '08
	Total	808.37	1033.74	36.00	5233.98	216.29	99.06	7427.44	4074.12	88.14	338.25	90.59	4591.10	

(Rs. in lakhs)

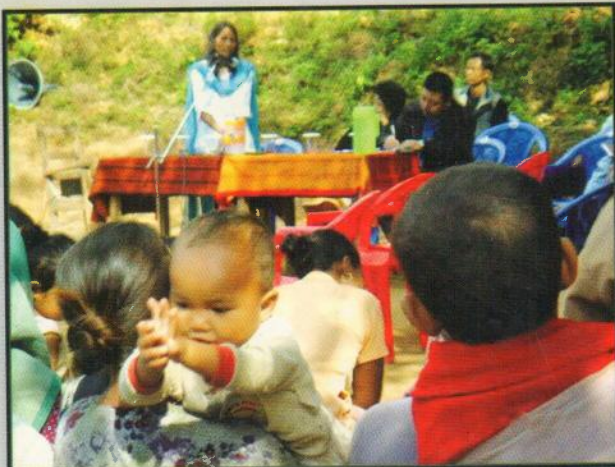
PART-IV

MONTHLY PROGRESS REPORT ON PHYSICAL PERFORMANCE INDICATING ASSETS CREATED UNDER NREGA DURING THE YEAR 2007 - 08 UP TO THE MONTH OF MARCH 2008.

NAME OF THE STATE : **MEGHALAYA**

Sl. No.	Works/Activities	Name of District : Ri-Bhoi				Name of District : Jaintia Hills				Total sum of all districts to give picture of the State as a whole			
		Completed Works		Ongoing Works		Completed Works		Ongoing Works		Completed Works		Ongoing Works	
		Unit (Numbers)	Expenditure (in Lakhs)	Unit (Numbers)	Expenditure (in Lakhs)	Unit (Numbers)	Expenditure (in Lakhs)	Unit (Numbers)	Expenditure (in Lakhs)	Unit (Numbers)	Expenditure (in Lakhs)	Unit (Numbers)	Expenditure (in Lakhs)
1	Water conservation and water harvesting (number of & cubic mts as well) {digging of new tanks/ponds percolation tanks, small check dams etc to be indicated separately}	0	cu.mt	17	cu.mt					510	327.99	450	0.00
2	Drought proofing (In nos.& hactere as well) (afforestation and tree plantation and other activities to be indicated separately)	0	hactere.	0	hactere.					464	527.12	430	0
3	Micro irrigation works (In nos. & length in km) (minor irrigation canals and other activities to be indicated separately)	0	kms.	0	kms.					137	158.97	100	0
4	Provision of irrigation facility to land owned by: (In nos) (scheduled castes and scheduled tribes, beneficiaries of land reforms and beneficiaries of Indra Awas Yojana etc to be indicated separately.	0	Irrigated Area (hectere)	0	Irrigated Area (hectere)					3	Irrigated Area (hectares)	11	Irrigated Area (hectares)

Sl. No.	Works/Activities	Name of District : Ri-Bhoi				Name of District : Jaintia Hills				Total sum of all districts to give picture of the State as a whole			
		Completed Works	Ongoing Works	Completed Works	Ongoing Works	Completed Works	Ongoing Works	Completed Works	Ongoing Works	Completed Works	Ongoing Works	Completed Works	Ongoing Works
		Unit (Numbers)	Expenditure (in Lakhs)	Unit (Numbers)	Expenditure (in Lakhs)	Unit (Numbers)	Expenditure (in Lakhs)	Unit (Numbers)	Expenditure (in Lakhs)	Unit (Numbers)	Expenditure (in Lakhs)	Unit (Numbers)	Expenditure (in Lakhs)
		0		cu.mt						380	175.82	319	123.51
5	Renovation of traditional water bodies (In nos. & cubic. mt as well) (desilting of tanks/ponds, desilting of old canals, desilting of traditional open well etc to be indicated separately)												
6	Land development (In nos. & hectare as well) (plantation, land levelling other activities to be indicated separately)	0		hectere						103	87.35	176	118.36
7	Flood control and protection (In nos. & length in km) (drainage in wager logged areas, construction and repair of embankment to be indicated separately)	0		kms.						55	120.87	50	58.96
8	Rural connectivity (In nos. & length in kms)	20		kms.						1021	1274.79	959	1091.70
9	Any other activity (approved by MRD)	0	0	0	0					0	0.00	0	0.00
	Total	20	0.00	162	0					2842	2675	2495	1983
	(unit in nos. & expenditure be reported in this row)												



SHARING OF KNOWLEDGE FOR
NATIONAL RURAL EMPLOYMENT GUARANTEE SCHEME: MEGHALAYA

