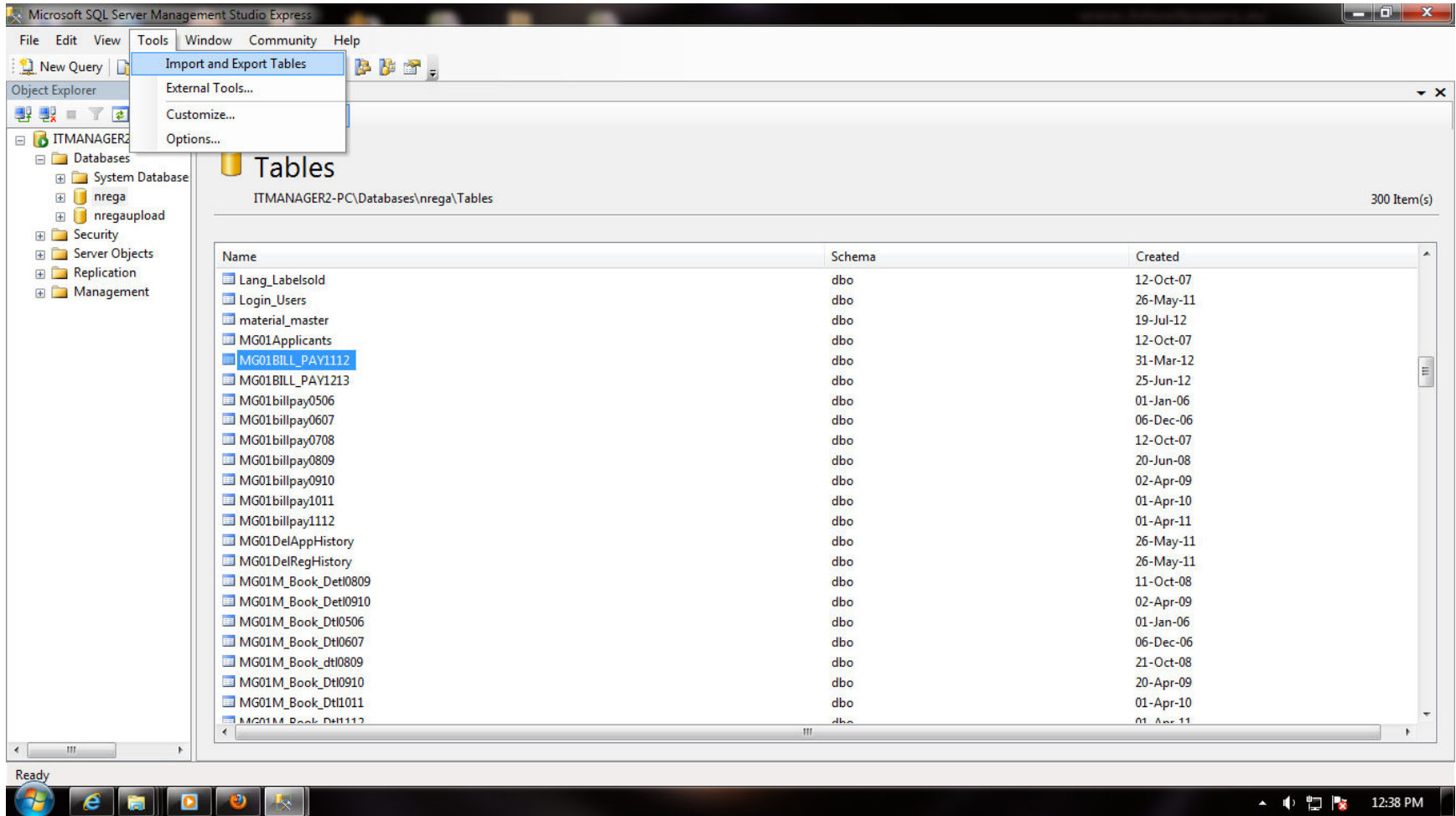
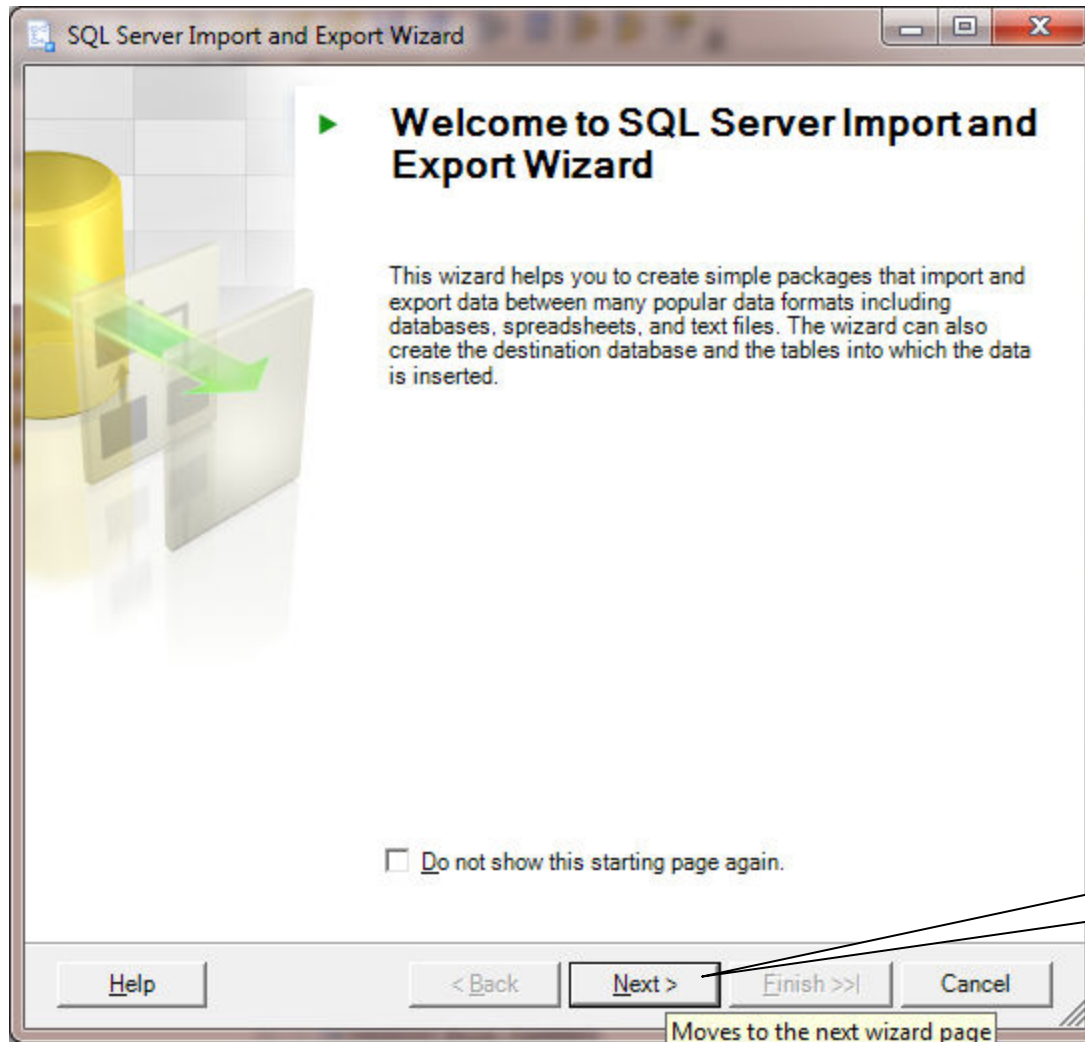
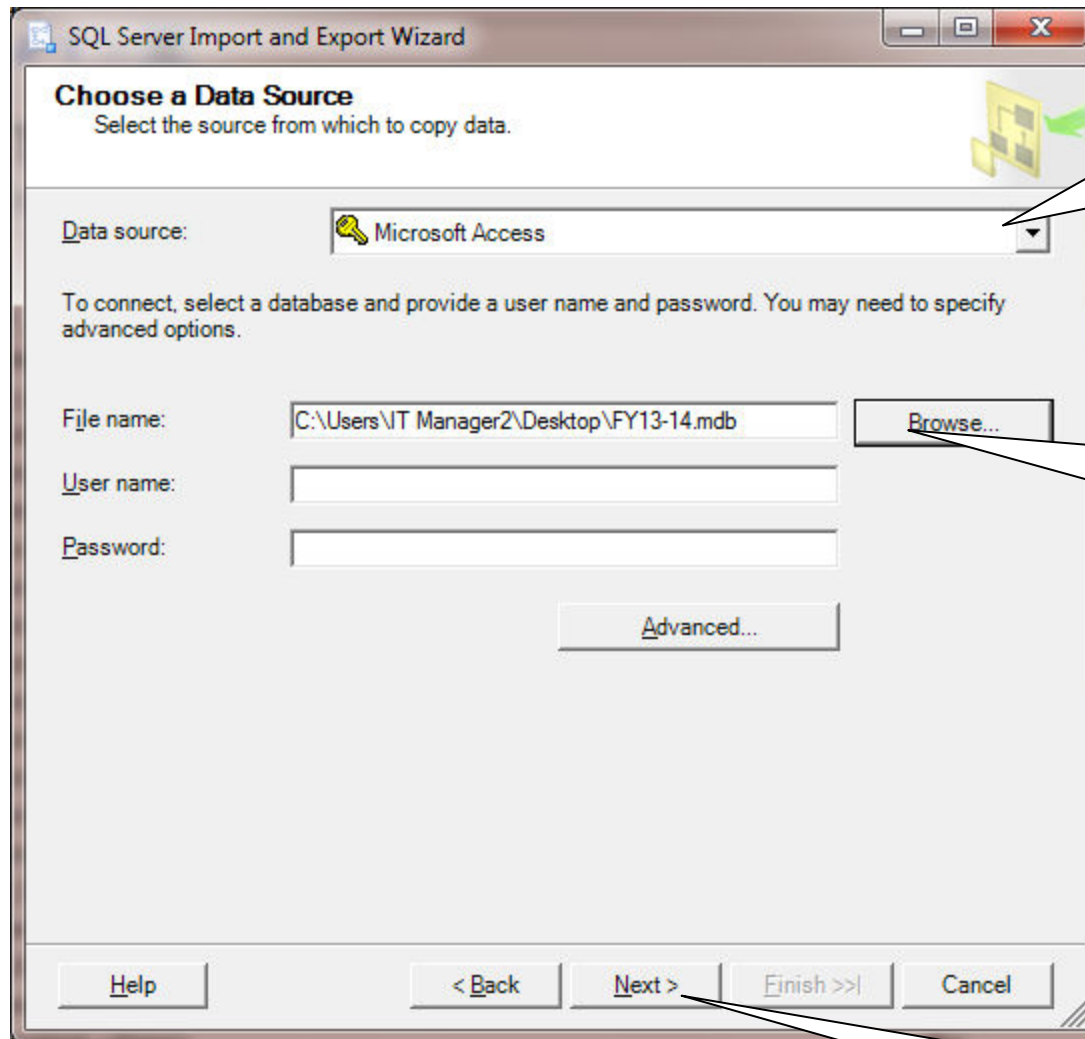


1. Choose Import and Export Tables option as shown below





2. Click the next button



3. Select Data source as Microsoft Access by clicking the drop down box.

4. Select the newly downloaded MS Access file named as "FY13-14.mdb"

5. Click Next

SQL Server Import and Export Wizard

### Choose a Destination

Specify where to copy data to.

Destination:

Server name:

Authentication

Use Windows Authentication

Use SQL Server Authentication

User name:

Password:

Database:

Refresh

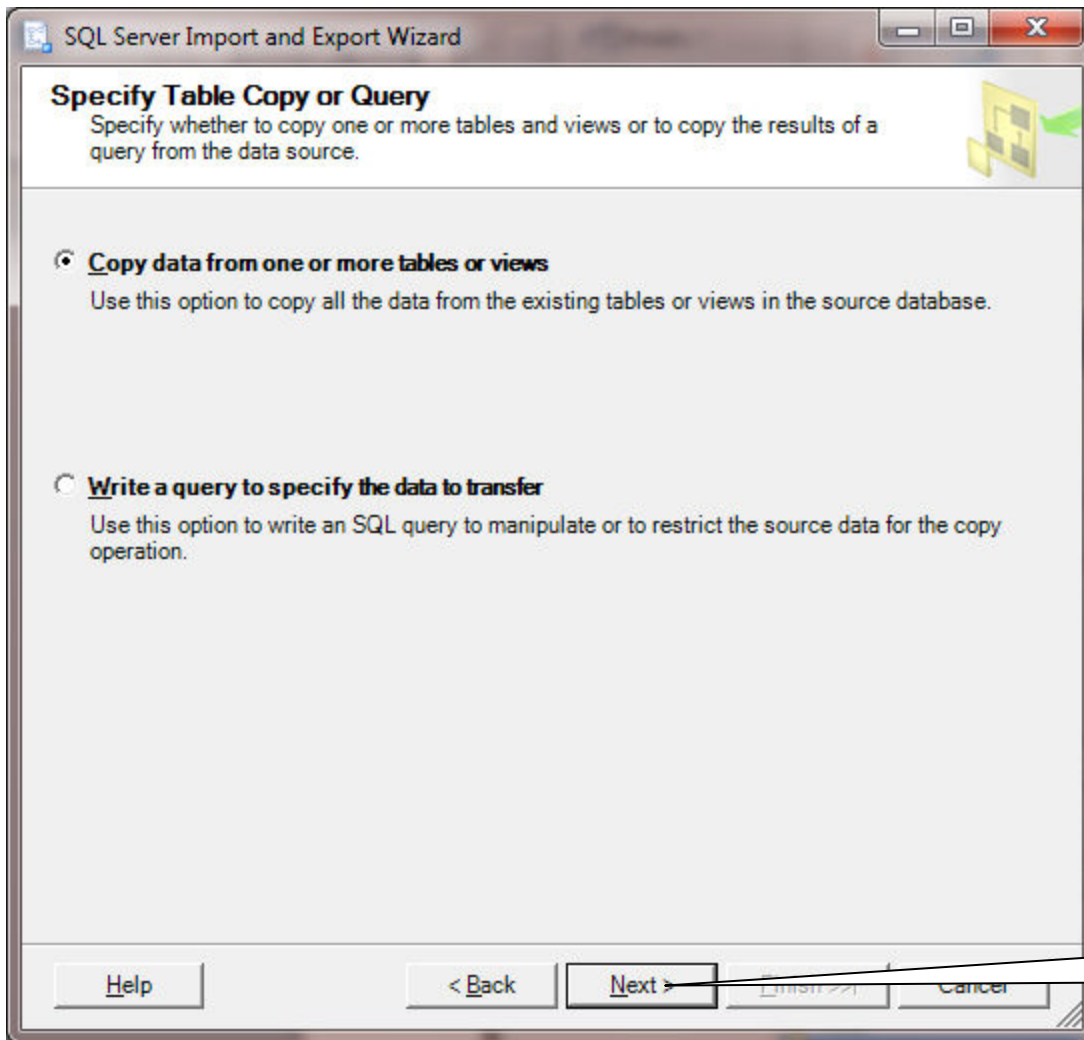
- <default>
- master
- model
- msdb
- nrega**

Help < Back **Next >** Finish >> Cancel

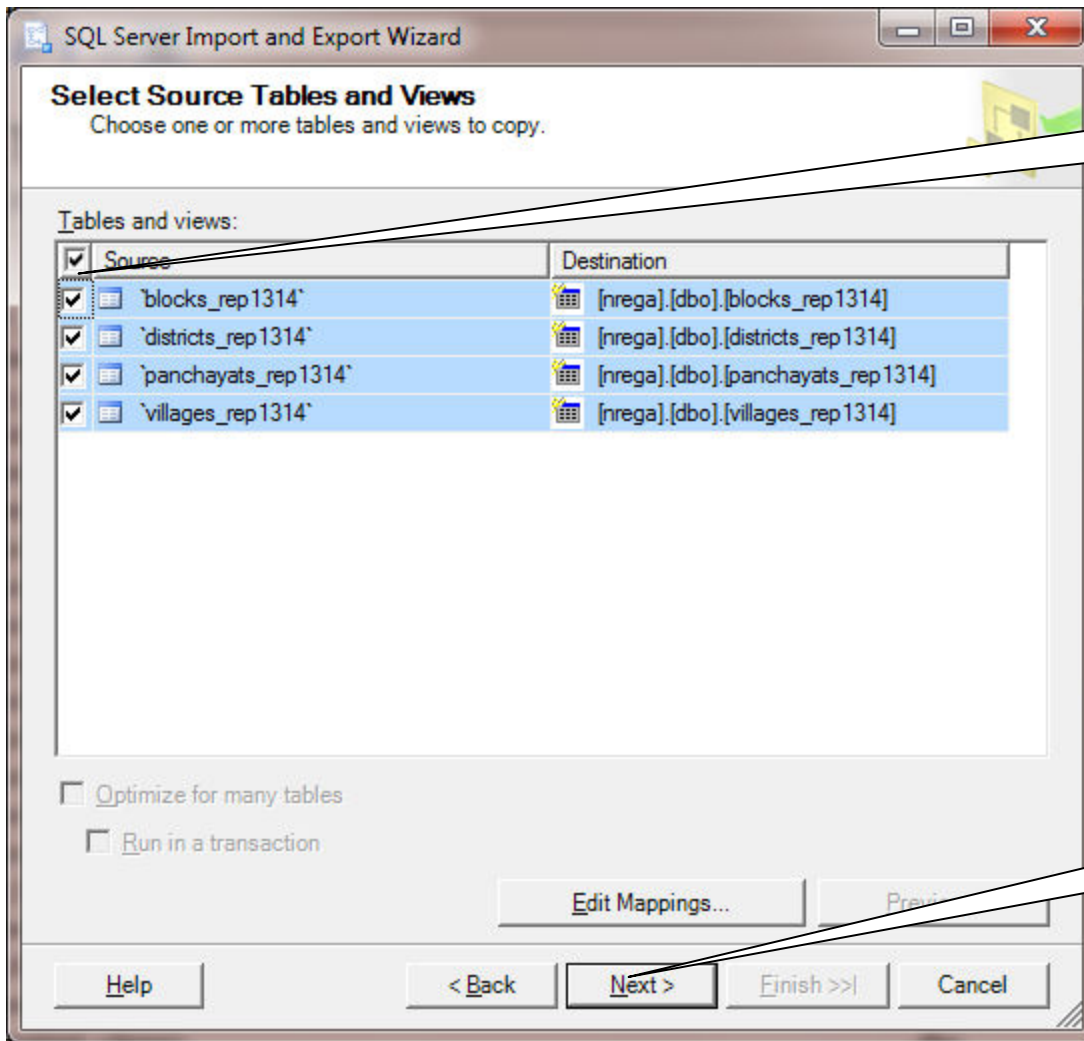
6. Click this radio button  
Username=sa  
Password=**nrega123 or 1 or 111**

7. Click the refresh button  
and select the nrega  
database

8. Click Next



9. Click Next



10. Tick against the tables and select them

11. Click Next

SQL Server Import and Export Wizard

### Save and Execute Package

Indicate whether to save the SSIS package.

**Execute immediately**

**Save SSIS Package**

- SQL Server
- File system

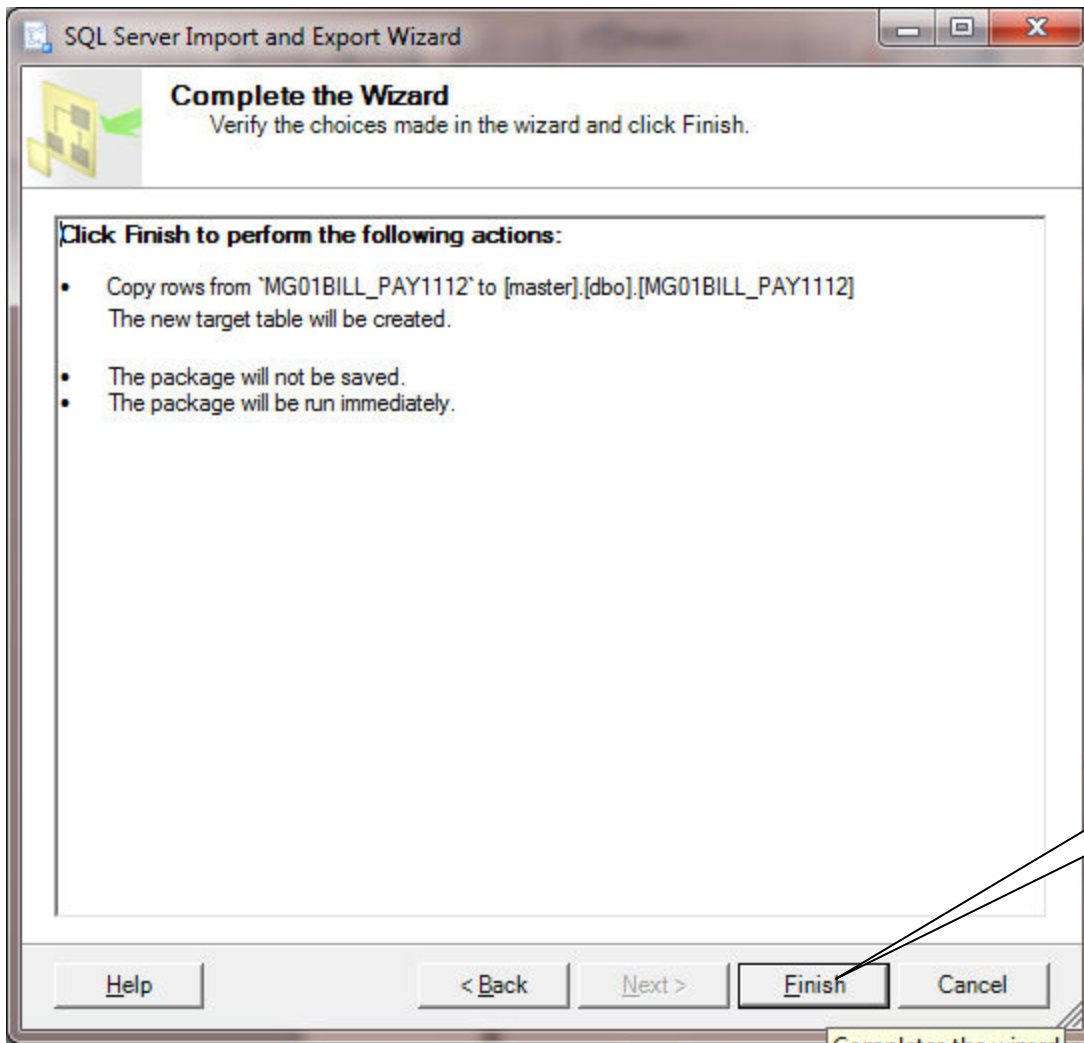
Package protection level:

Encrypt sensitive data with user key

Password:

Retype password:

12. Click Next



13. Click Finish



