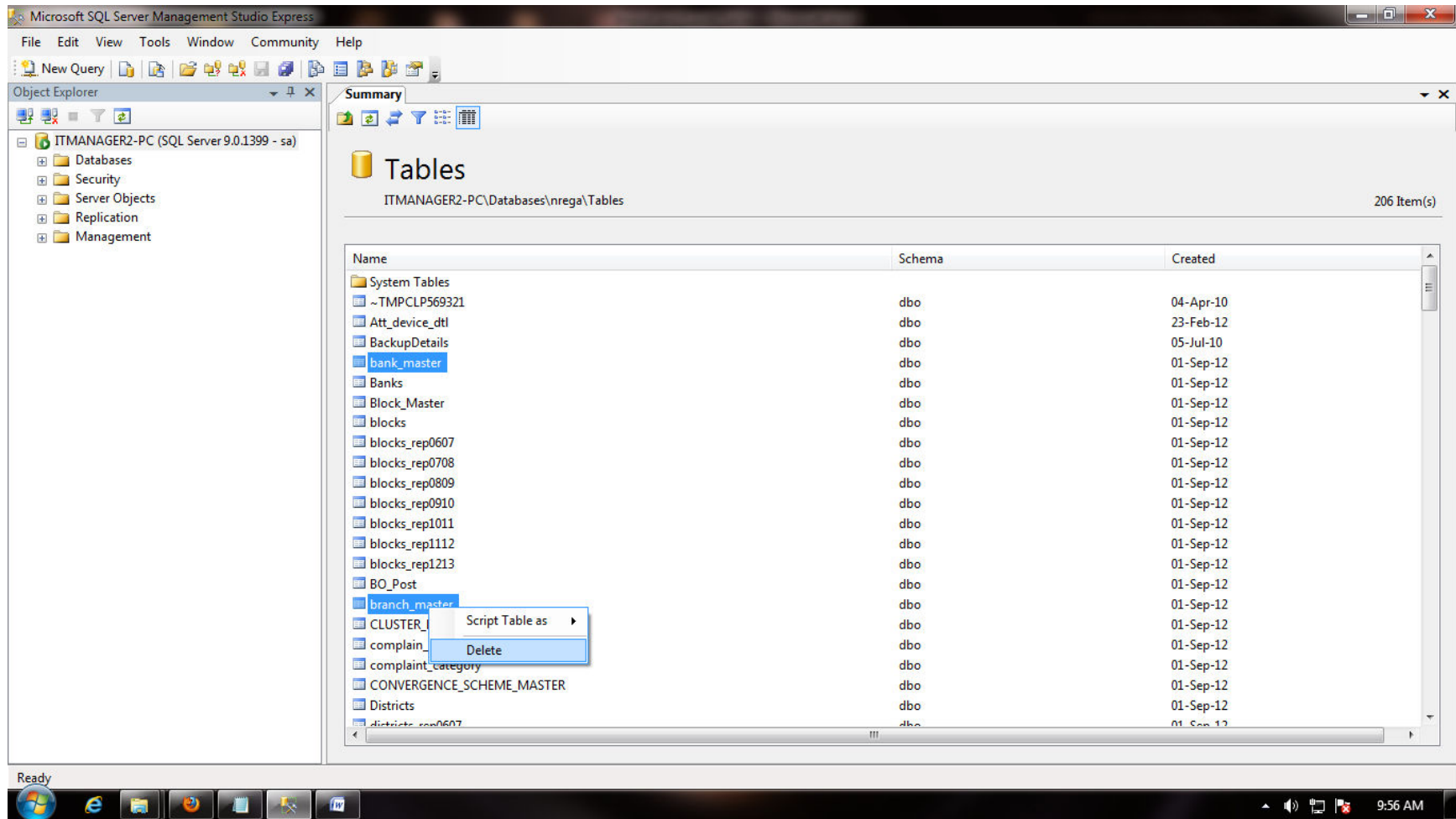


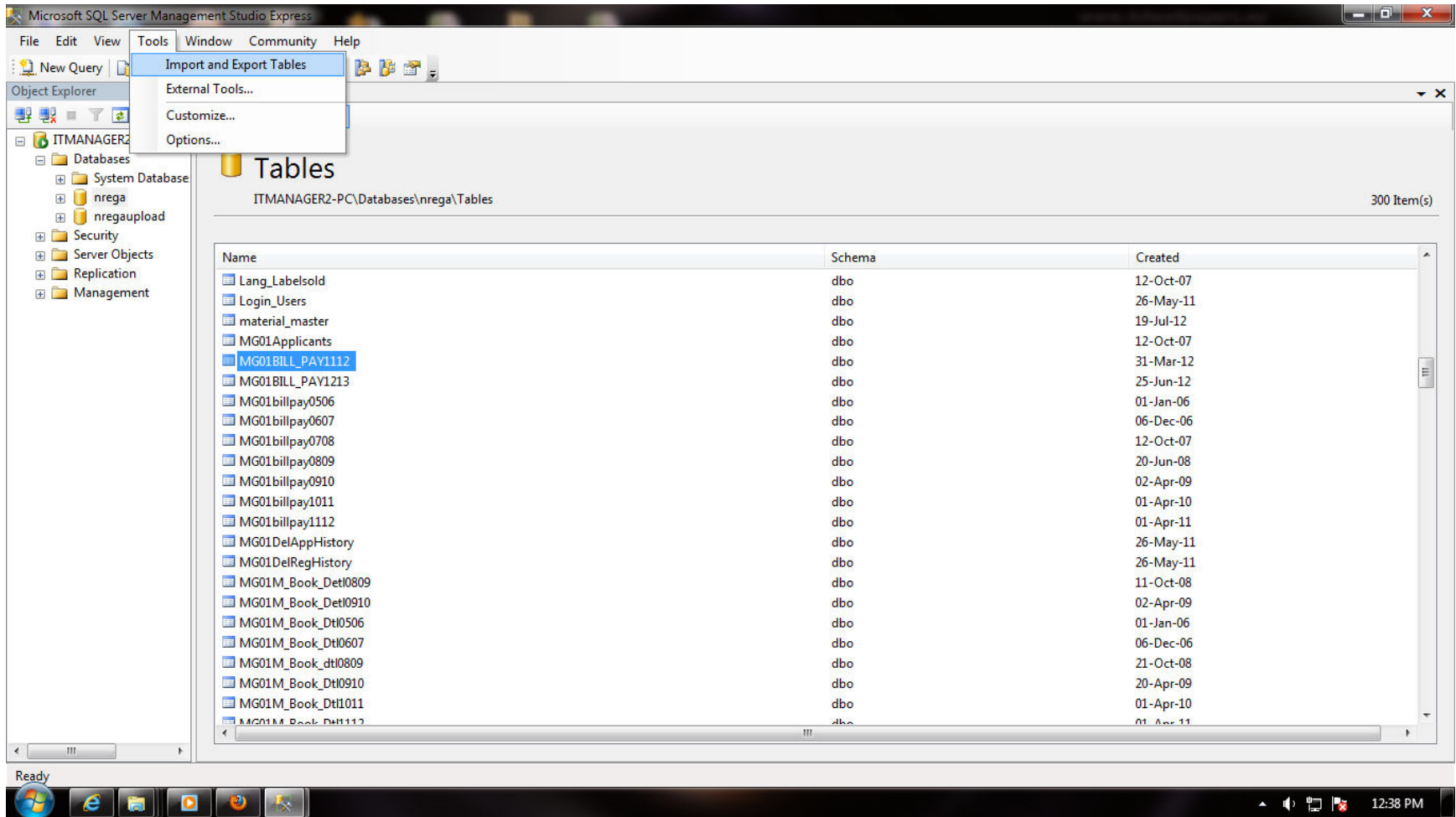
First delete the following two tables from the nrega database. The table names are

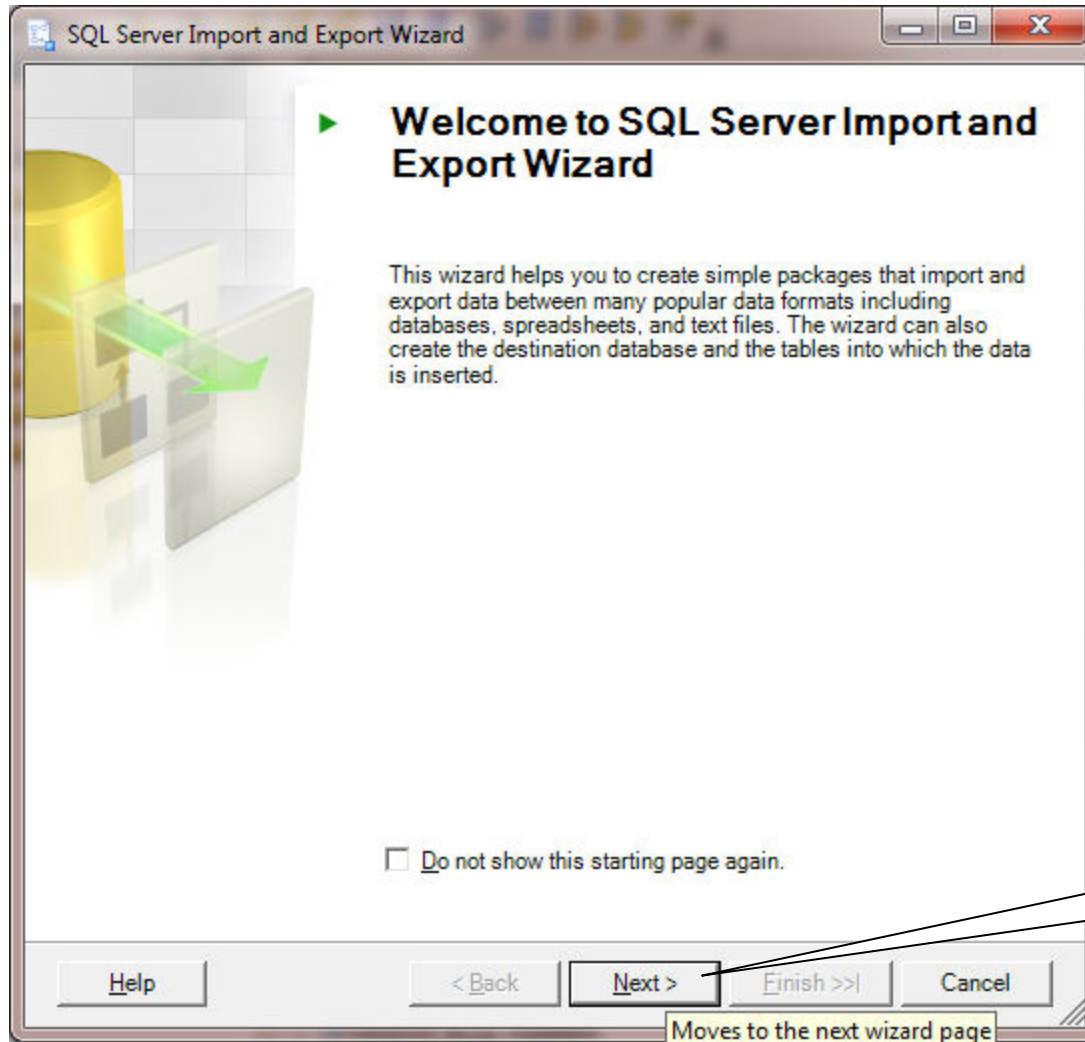
a) Bank_master

b)branch_master

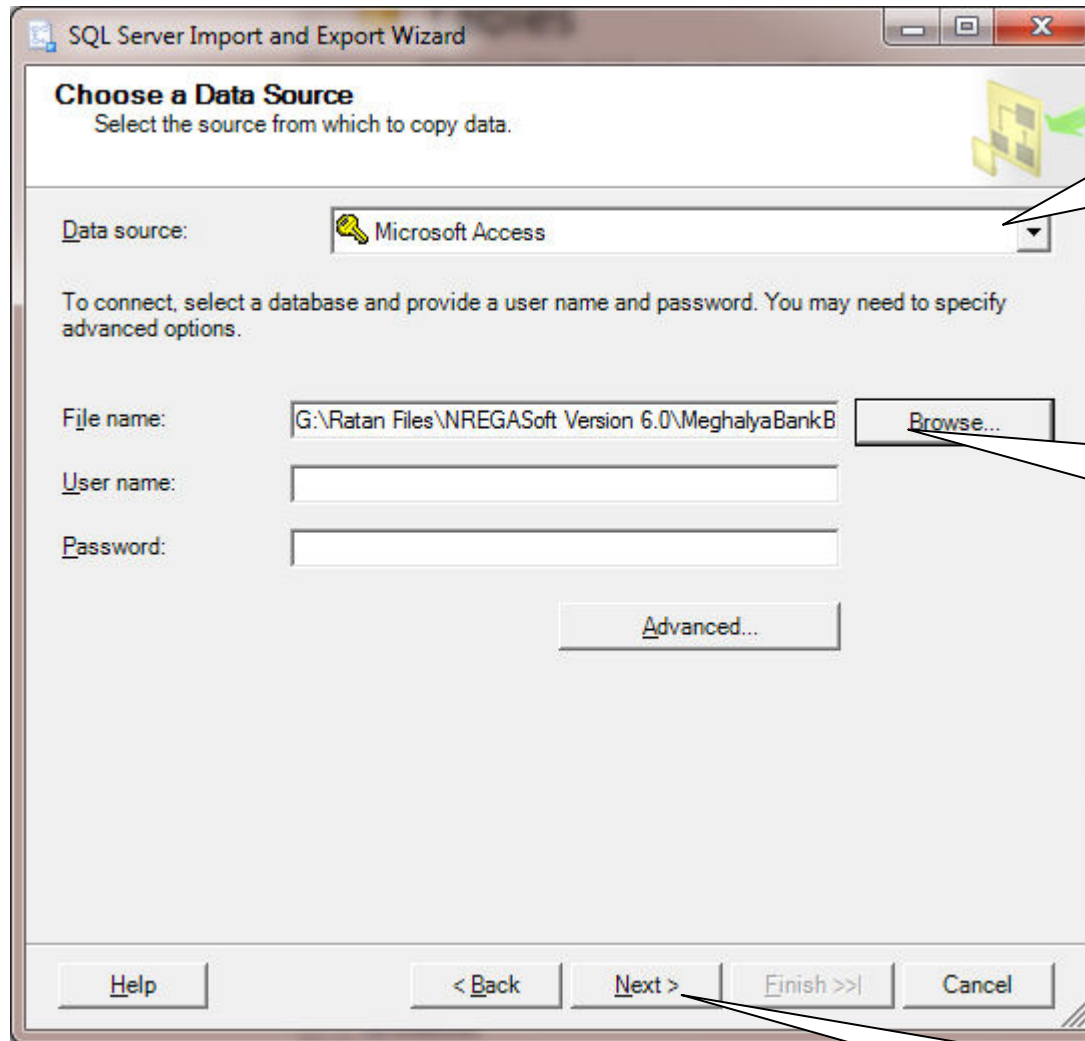


1. Next Choose Import and Export Tables option as shown below





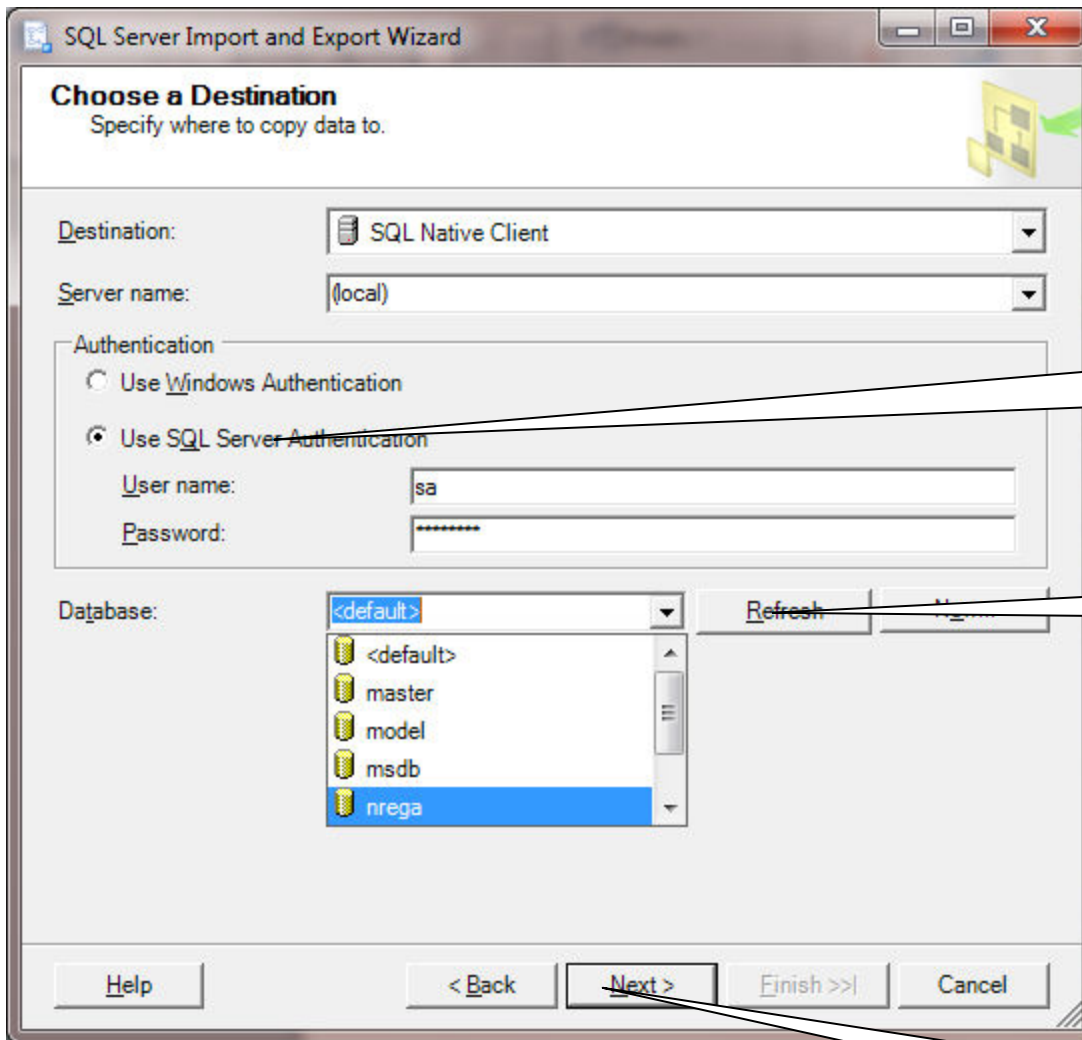
2. Click the next button



3. Select Data source as Microsoft Access by clicking the drop down box.

4. Select the newly downloaded MS Access file named as "MeghalyaBankBranch"

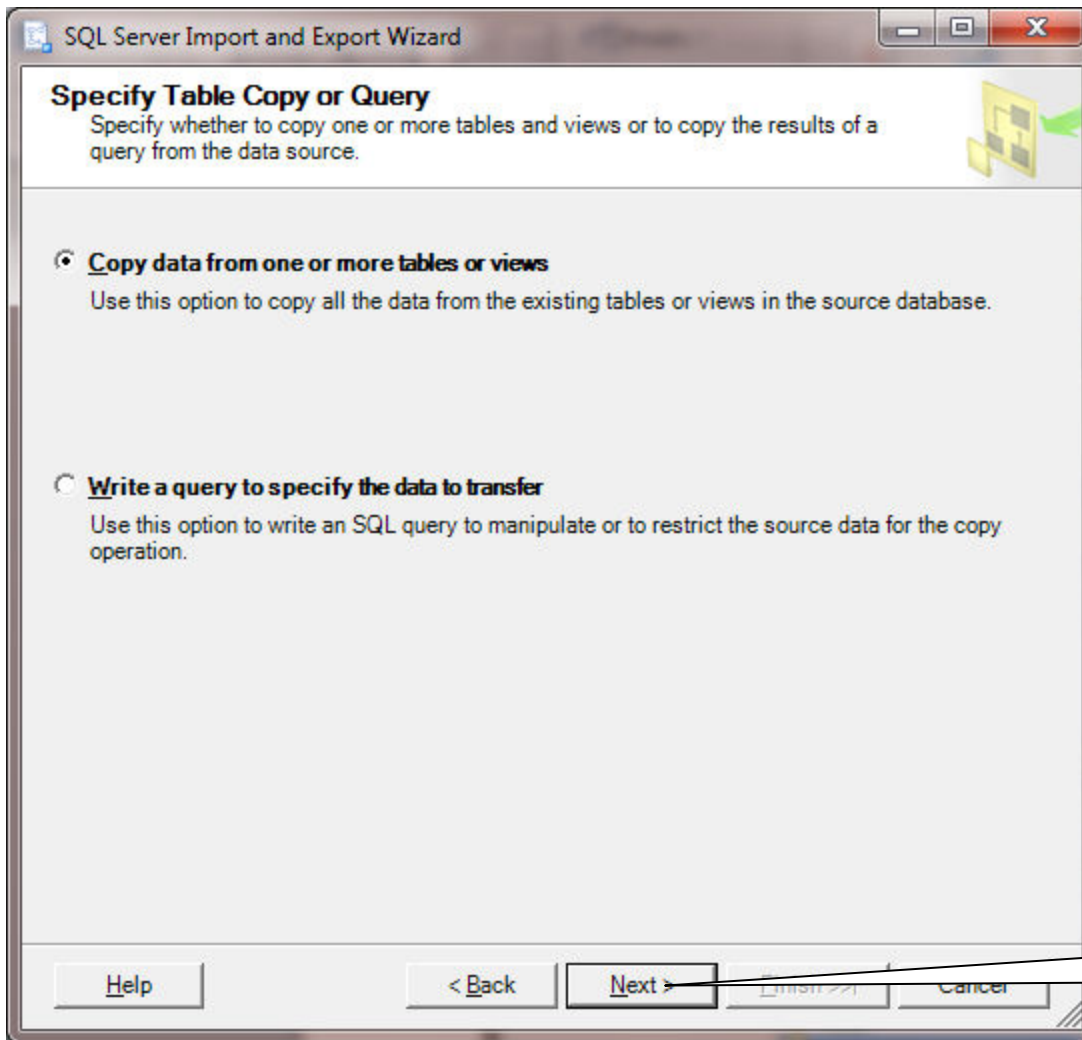
5. Click Next



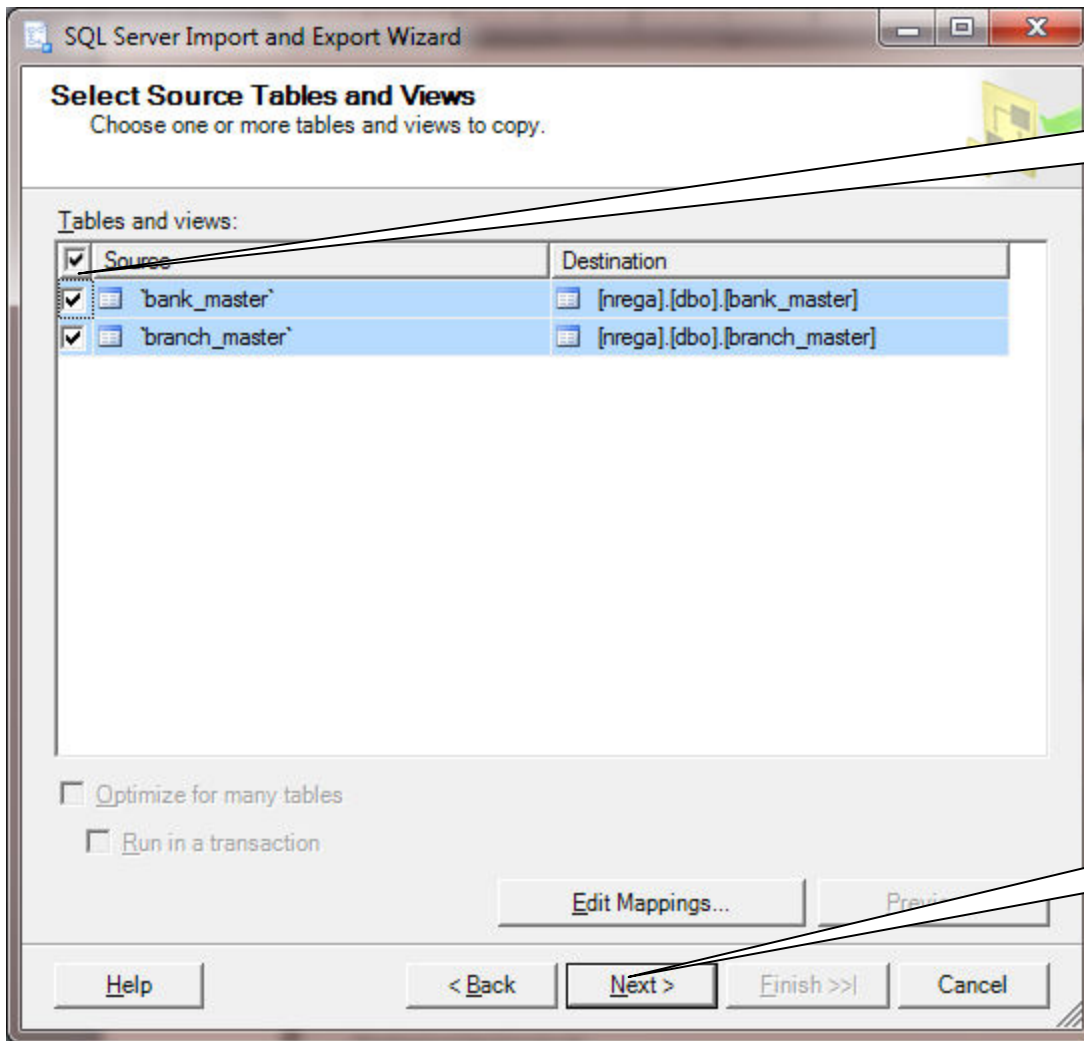
6. Click this radio button
Username=sa
Password=nrega123 or 1 or
111

7. Click the refresh button
and select the nrega
database

8. Click Next



9. Click Next



10. Tick against the tables and select them

11. Click Next

SQL Server Import and Export Wizard

Save and Execute Package

Indicate whether to save the SSIS package.

Execute immediately

Save SSIS Package

- SQL Server
- File system

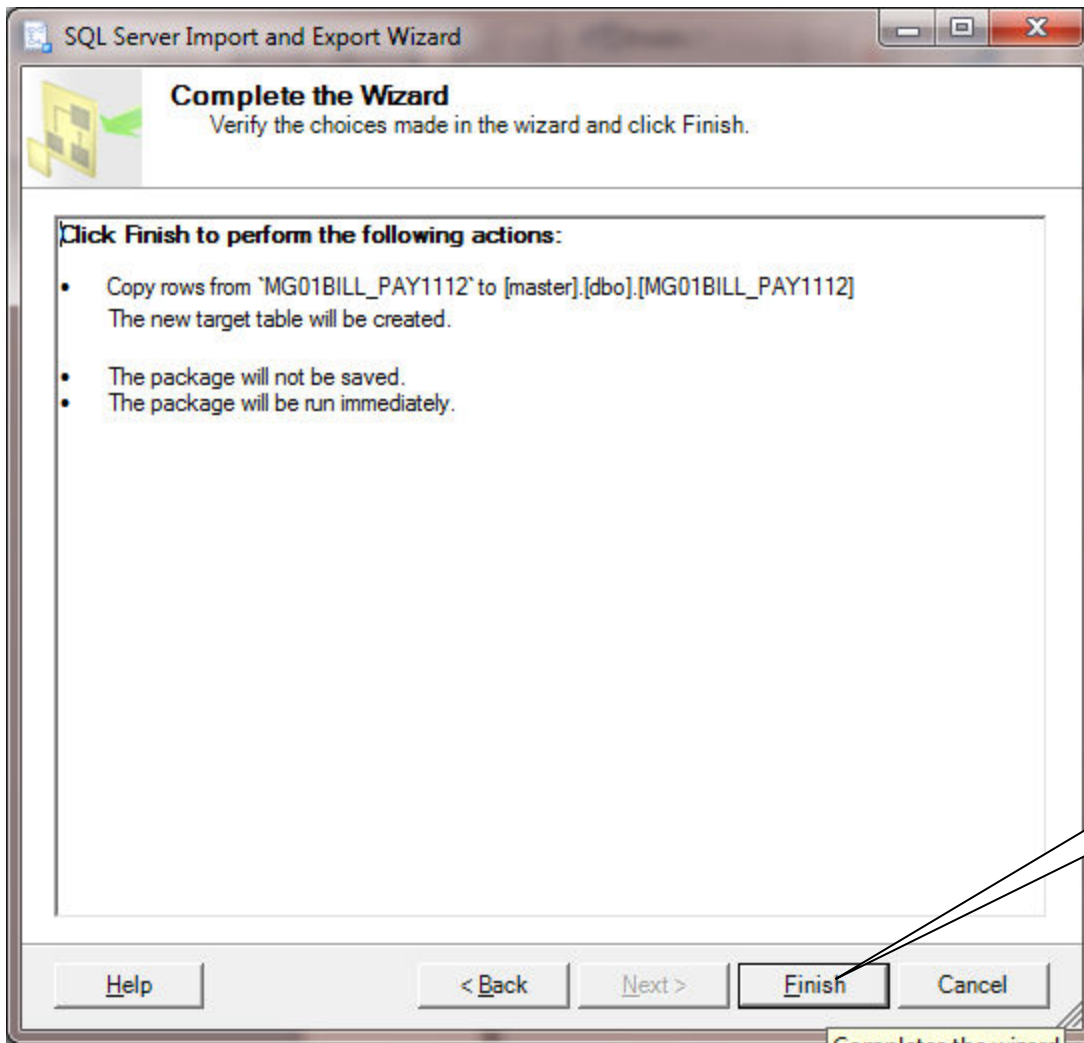
Package protection level:

Encrypt sensitive data with user key

Password:

Retype password:

12. Click Next



13. Click Finish